

Human BAFF/TNFSF13B/CD257 Protein

Cat. No. BAF-HM214

Description

Source	Recombinant Human BAFF/TNFSF13B/CD257 Protein is expressed from HEK293 with hFc tag at the N-Terminus. It contains Ala134-Leu285.
Accession	Q9Y275-1
Molecular Weight	The protein has a predicted MW of 41.7 kDa. Due to glycosylation, the protein migrates to 45-48 kDa based on Bis-Tris PAGE result.
Endotoxin	Less than 1EU per μg by the LAL method.
Purity	> 90% as determined by Bis-Tris PAGE > 90% as determined by HPLC

Formulation and Storage

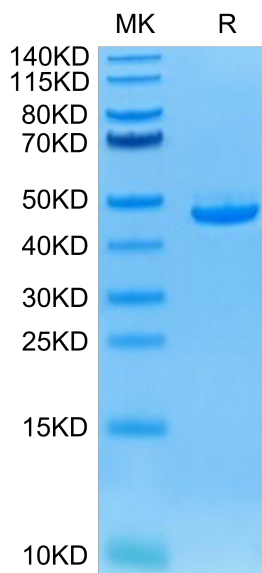
Formulation	Lyophilized from 0.22 μm filtered solution in PBS (pH 7.4). Normally 8% trehalose is added as protectant before lyophilization.
Reconstitution	Centrifuge the tube before opening. Reconstituting to a concentration more than 100 $\mu\text{g}/\text{ml}$ is recommended. Dissolve the lyophilized protein in distilled water.
Storage	-20 to -80°C for 24 months as supplied from date of receipt. -80°C for 3 months after reconstitution. Recommend to aliquot the protein into smaller quantities for optimal storage. Please minimize freeze-thaw cycles.

Background

B-cell activating factor (BAFF) also known as tumor necrosis factor ligand superfamily member 13B is a protein that in humans is encoded by the TNFSF13B gene. BAFF is a cytokine that belongs to the tumor necrosis factor (TNF) ligand family. This cytokine is a ligand for receptors TNFRSF13B/TACI, TNFRSF17/BCMA, and TNFRSF13C/BAFF-R.

Assay Data

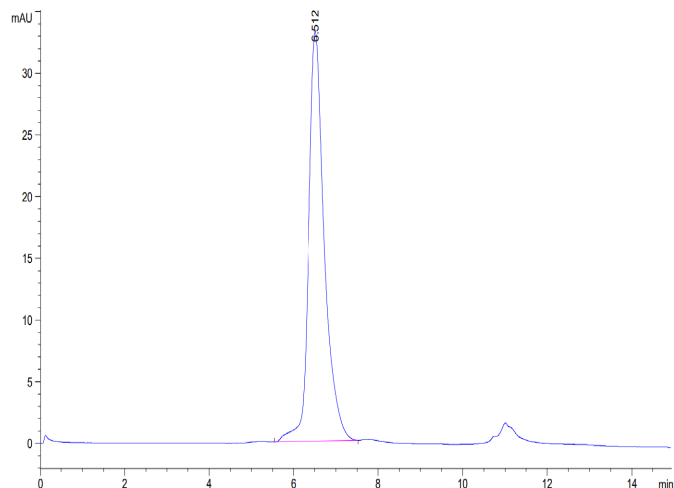
Bis-Tris PAGE



Human BAFF on Bis-Tris PAGE under reduced condition. The purity is greater than 95%.

SEC-HPLC

Assay Data

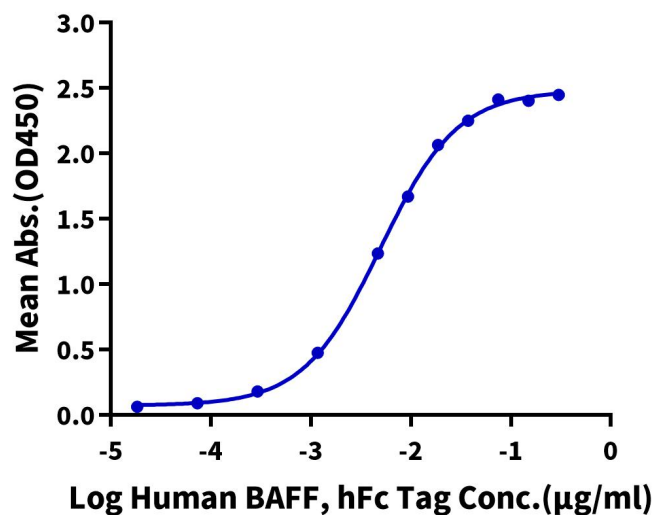


The purity of Human BAFF is greater than 95% as determined by SEC-HPLC.

ELISA Data

Human BAFF, hFc Tag ELISA

0.1µg Human BCMA Trimer, His Tag Per Well

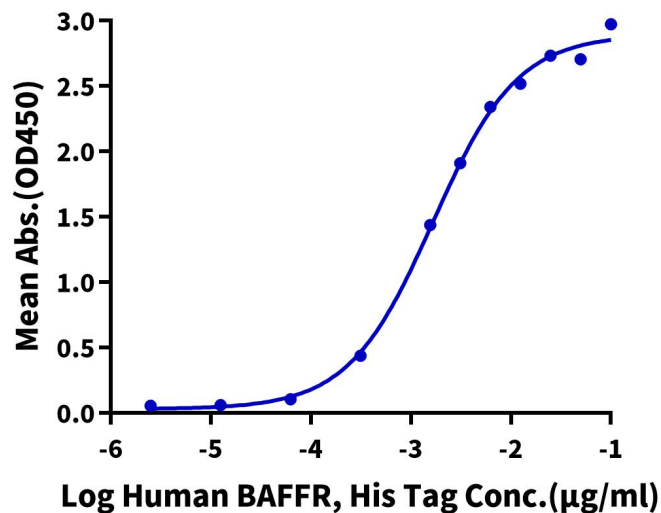


Immobilized Human BCMA Trimer, His Tag at 1µg/ml (100µl/Well) on the plate. Dose response curve for Human BAFF, hFc Tag with the EC50 of 5.0ng/ml determined by ELISA (QC Test).

ELISA Data

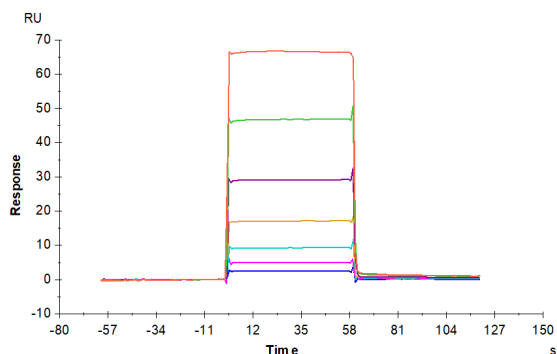
Human BAFF, hFc Tag ELISA

0.1 µg Human BAFF, hFc Tag Per Well



Immobilized Human BAFF, hFc Tag at 1 µg/ml (100 µl/well) on the plate. Dose response curve for Human BAFFR, His Tag with the EC50 of 1.7 ng/ml determined by ELISA.

SPR Data



Human BAFF, hFc Tag captured on CM5 Chip via Protein A can bind Mouse BCMA, His-Avi Tag with an affinity constant of 5.83 µM as determined in SPR assay (Biacore T200).